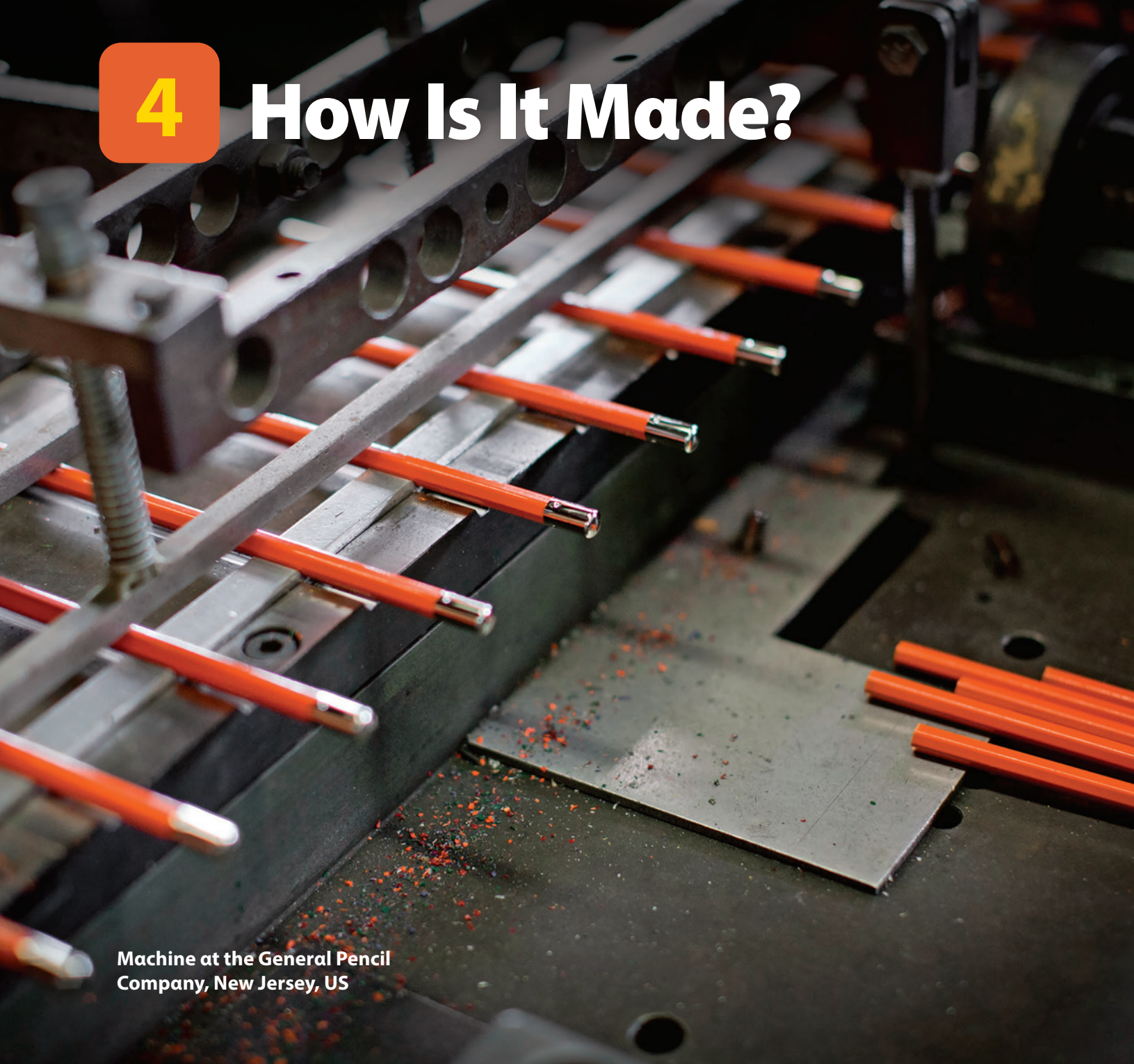


4

How Is It Made?



Machine at the General Pencil Company, New Jersey, US

A Read and circle the correct answer.

On average a pencil can be sharpened
¹ 7 / 17 times, draw a line ² 35 / 350 miles
long and can write approximately
³ 15,000 / 45,000 words. More than half of
all pencils come from China, with factories
turning out ⁴ 5 / 10 billion pencils.

B Think about an object you use every day
and discuss in pairs.


1. What is it and what do you use it for?
2. What is it made of?
3. How do you think it was made?

A Listen and repeat. TR: 4.1



B Complete the instructions with words from Activity A.

How to Make Jam

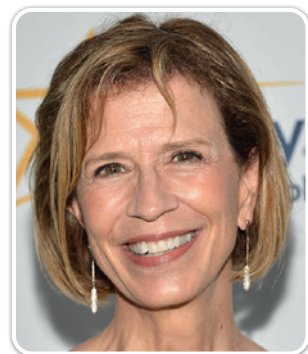


Put 900 grams of strawberries into a large ¹_____ pot. Add some lemon juice and 900 grams of sugar. ²_____ the mixture for 20 minutes. Ask an adult to help you. Be careful—the mixture will get very hot. Then take the pot off the stove and ³_____ the mixture for 15 minutes. ⁴_____ it into some glass ⁵_____. Now you have some delicious strawberry jam!

C Listen to the description of the factory that Annie Griffiths photographed. Then complete the sentences with the words from the box. TR: 4.2

candies cardboard festivals fruit metal pour sugar

- The Showaiter family makes _____.
- They put water, oil, and _____ into a pot.
- Then they add nuts and _____.
- They _____ the mixture into metal pans.
- At their stores, they put the candies into boxes made of _____ or plastic.
- People often eat halwa at _____ or parties.



Annie Griffiths, National Geographic photographer

A Study the grammar box.

Simple present passive
is/are + past participle

We use the passive when the action is more important than the person/thing that does it. We often use the passive to explain a process. Water, oil, and sugar **are put** into a large pot. The mixture **is poured** into metal pans.

B Complete the sentences. Listen and check. TR: 4.3

cool eat heat ~~make~~ sell

- The Showaiter halwa is made in one and a half hours.
- Water, oil, and sugar _____ and mixed together.
- The mixture _____ in metal pans.
- The candies _____ in candy stores.
- Halwa _____ with strong coffee.

C Say these sentences in the passive.

- They grow rice in China.
- They speak English and French in Canada.
- They eat sushi in Japan.
- They make Audi cars in Germany.
- They celebrate Thanksgiving in the US.

Rice is grown in China.

D Work in pairs. Choose one word from each pair. Describe the word with the simple present passive of the verb in parentheses. Can your partner guess the word?

- English, French (speak)
- jam, yogurt (eat)
- shoes, pants (wear)
- soccer, ping-pong (play)
- letters, emails (send)

It's eaten on bread.

Jam!



Making halwa at the Showaiter Family factory in Bahrain

A Listen and repeat.  TR: 4.4

yarn dyed dye denim fabric assembly line

B Listen and read.  TR: 4.5

How Jeans Are Made

What are you wearing? Are you wearing jeans? If not, you probably have a pair in your closet. Jeans are worn all over the world, and many people have more than one pair.

So, how are jeans made?

Cotton is picked, cleaned, and then made into **yarn**. The original color of the yarn is white.

Next, some of the yarn is **dyed** with indigo. Indigo is a blue color. Originally, the **dye** came from the leaves of a plant from India. Today, most of the indigo dye isn't made from plants. It's produced in factories.

After that, the **denim fabric** is made from the blue and white yarn. A machine makes the denim in a special way so that the color is mostly blue. Next time you wear your jeans, look closely at them; can you see the white yarn?

The denim fabric is then cut into the shape of jeans. Up to 80 different sizes can be cut!

Next, different parts of the jeans are sewn by people in an **assembly line**. For example, some people sew only the back pockets. Others sew only the front and back of each leg together.

When the jeans are made, they are washed and dried many times. Then they are ready to go to the stores for you to buy!

C Read again. Answer the questions.

1. What is the yarn made of?
2. What color is the yarn before it is dyed blue?
3. What country did the dye come from?
4. How many different sizes can be cut?
5. What happens after the jeans are made?

D Do you know how other types of clothes are made? Which kinds?

A Study the grammar box.

Simple present passive: questions and negatives

How **are** blue jeans **made**?

Is cotton **made** into yarn?

Today, most of the indigo dye **isn't made** from plants.

The jeans **aren't taken** to the stores immediately.

We use *by* if we want to say who or what does the action.

Next, different parts of the jeans are sewn **by** people in an assembly line.

B Complete the questions. Discuss them in pairs. Then listen and check.  TR: 4.6

1. How are skinny jeans made? (make)
2. How many pairs of jeans _____ every year in America? (sell)
3. What other colors _____ today to dye denim? (use)
4. _____ the inside of jeans _____ with dyed or white yarn? (make)
5. What other types of jeans _____ today? (sell)

C Sentences 1–5 are false. Correct them.

1. Spanish is spoken in Germany.
2. Pearls are grown on trees.
3. Halwa is sold in clothing stores.
4. Orange juice is made from apples.
5. Ambulances are driven by farmers.

Spanish isn't spoken in Germany.
Spanish is spoken in Spain.

D Complete sentences 1–4 with the simple present passive and your own ideas. Then ask and answer with a partner.

1. My favorite subject / teach / by...
2. My favorite fruit / grow / in...
3. The best cars in the world / make / by...
4. The most delicious food in the world / cook / by...

Who's your favorite subject taught by?

My favorite subject is taught by Mrs. Hunt.

Making jeans in a factory, Italy

A Read the information in the box.

A fact file gives us the most important and interesting information about a topic. The information is divided in sections to make it easy to read.

B Read a fact file about an invention. Answer the questions.

1. What is the invention called?
2. Who invented it?
3. What did they use to make it?
4. Where is it used?
5. What kind of litter does it collect?

Name of Invention:
The SeaBin

Inventors: two surfers from Australia

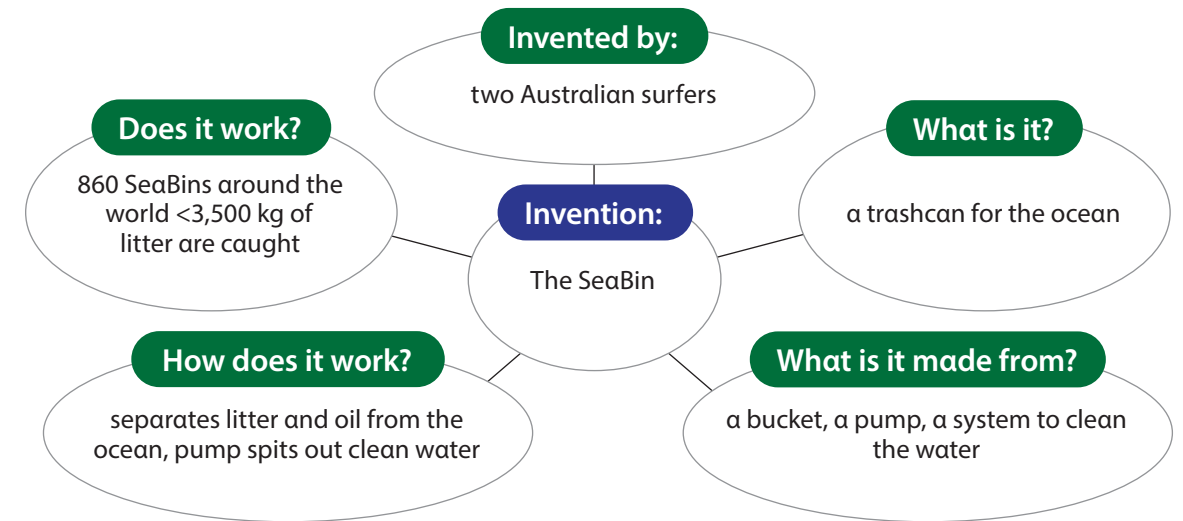
What is it? It's like a trashcan for the oceans.

What is it made from? a bucket with a pump and a system to clean the water

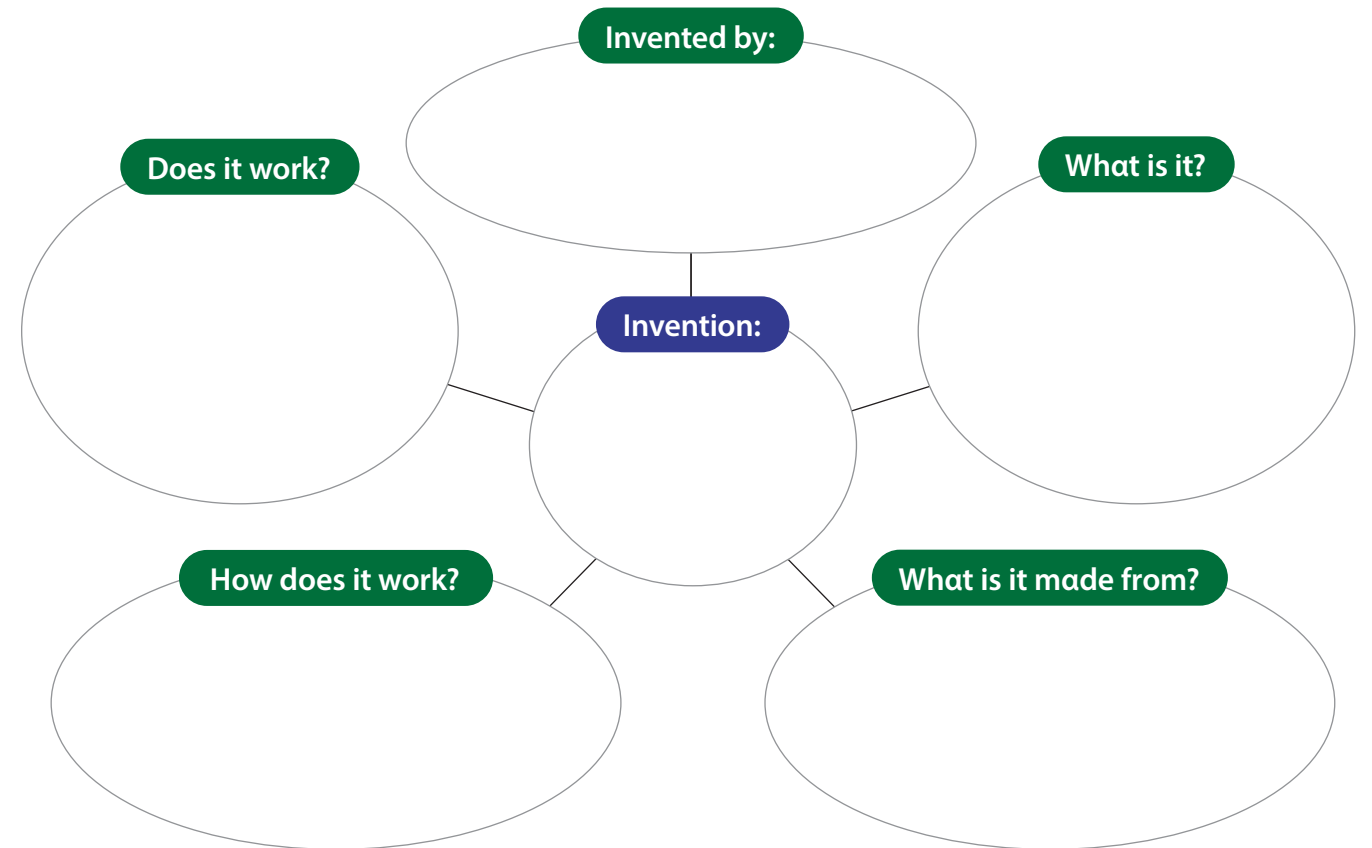
How does it work? It is designed to clean the ocean from litter. The oil can also be separated from the seawater inside the bucket. Clean water comes out the other side.

How well does it work? 860 SeaBins are installed around the world. Over 3,500 kilograms of litter are caught every day. This includes plastic bags, disposable cups, plastic bottles, and utensils.

C Read the fact file again. Use the chart to learn how to write a fact file.

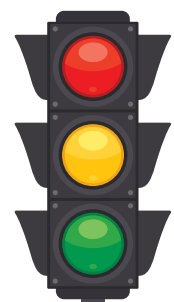


D Plan your writing. Write a fact file about an invention. First, use the chart to help you.



E Write a fact file about the invention you chose. Write in your Workbook or notebook. You can add more facts if you like!

Name of Invention: The Three-Color Traffic Light
 Inventor(s): Garrett Morgan



- A** Work in pairs. Look at the things on your desk and in your bag. Do you know where they come from? Do you know how they are made?
- B** Listen, read, and write. Then discuss your answers to the four questions in the chant. TR: 4.7
- C** Listen and chant. TR: 4.8 and 4.9

VALUE
Think about where things come from.

Where Are They From?

We can find out all about the world.
 We don't have to go far away.
 Let's look at the things at home and at school
 and think about where they ¹_____.

Look at this silver necklace.
 I know silver comes from the ground.
 But there's no silver in my garden.
 So where ²_____ silver ³_____?

Let's have a cup of coffee.
 It's a delicious drink, you know.
 Coffee comes from coffee beans.
 But where ⁴_____ coffee beans
⁵_____?

I borrowed my brother's smartphone.
 I want to play a game.
 His phone came from a phone store.
 But where ⁶_____ phones ⁷_____?

This black pearl ring is my mother's.
 It isn't really black, it's dark blue.
 I know pearls come from oysters.
 But where ⁸_____ this ring ⁹_____?

GLOSSARY
 silver a kind of metal
 ring a round piece of metal that people wear on their finger
 produce (verb) make



A man dumps a handful of coffee beans into a basket, Ethiopia

Checking if someone is free

Are you free on Saturday morning?
 Do you want to watch a movie tomorrow?

Responding

Yes, I am. / Sorry, I'm visiting my aunt then.
 I'd love to! / I'm sorry. I'm busy tomorrow.

Planning a time and a place

When/Where should we meet?
 Why don't we meet at three o'clock outside the movie theater?
 I'll see you in the café at a quarter past four.

Time



two o'clock



a quarter past two



two thirty



a quarter to two

- A** Listen and complete. Then practice in pairs. TR: 4.10

Yasmina: Hi Nadia. Are you free ¹_____?

Nadia: Sorry, ²_____ with Rana then.

Yasmina: What about ³_____?

Nadia: No, I'm sorry. I have a ⁴_____. But I'm free on Sunday!

Yasmina: Great! Do you want to come to my house? I have a ⁵_____. We can play that and then you can have lunch with us.

Nadia: Yes, thank you, I'd love to. What time should I come?

Yasmina: Why don't we meet at ⁶_____ at the park? Then we can buy some food ⁷_____ by the park and walk back to my house.

Nadia: Great idea! I'll see you ⁸_____ then.

- B** Work in pairs. Take turns to make a plan for next weekend.

Plan 1	Student A	Student B
When:	Saturday morning	play a soccer game
Another day:	Sunday afternoon	✓
Activity:	go to the movies	✓ (where/when?)
When and where:	3:30 outside the movie theater	✓
Plan 2	Student B	Student A
When:	Friday afternoon	have a guitar lesson
Another day:	Saturday afternoon	✓
Activity:	play badminton	✓ (where/when?)
When and where:	4:15 at the sports center	✓

Are you free on Saturday morning?

Sorry, I have a soccer game.



Shadow Puppet Shows

People in many cultures love theater. One of the oldest and greatest storytelling traditions in the world can be seen in theaters in Indonesia. It is a kind of shadow puppet show called *Wayang Kulit*. *Wayang* means leather and *kulit* means puppet.

In a *Wayang Kulit* show, the stage and the equipment are quite simple—not like traditional theaters! There are puppets, musicians, a puppeteer, and a screen made from a white sheet.

Wayang Kulit puppets are flat and made of leather, and they come in big and small sizes. They have different eyes, noses, and mouths, so they all look very different—just like people! Each puppet plays a different character in a story. Some characters are good, and some are bad. Puppets, which are

painted in bright colors, are sometimes used for daytime puppet shows.

For each show, there is only one puppeteer. He moves the puppets, tells the story, and does the voice for each character. Puppeteers are amazing because there are sometimes between 100 and 500 puppets for him to move in one show! This is a very special job and it is not easy. Good puppeteers are celebrities in Indonesia, and sometimes more than 6,000 people come to see the show.

In a *Wayang Kulit* show, the puppeteer sits behind a white screen. A lamp or light is shone onto the screen, so the puppets look like dark shadows. Each puppet has three sticks attached to it: one on

the body, and one on each arm. The puppeteer moves the puppet with these sticks. Usually, good characters appear on the right side of the screen, and bad characters appear on the left side.

Each show also includes a musical performance. A group of musicians play the *gamelan*. This is a group of many different instruments. The puppeteer works with the musicians. He tells them when to play loudly or softly, or slowly or quickly. This makes the show very exciting.

One of the most amazing things about the *Wayang Kulit*, is that a show can last all night, sometimes up to ten hours! The puppeteer and musicians are going to be tired after each show!

- A** Do you enjoy seeing shows at the theater? Why or why not?
- B** Listen and read. What type of characters are in a *Wayang Kulit* show? [TR: 4.11](#)
- C** Read again. Answer the questions.
1. Where can you see a *Wayang Kulit* show?
 2. What are the puppets like? Name three things.
 3. What does the puppeteer do? Name three things.
 4. How many puppets can be used in a show?
 5. What is a *gamelan*?
 6. How long is a *Wayang Kulit* show?
- D** Work in groups of three. Each student explains one part of *Wayang Kulit*.
- E** Why do you think *Wayang Kulit* puppeteers are celebrities in Indonesia?



Wayang Kulit puppeteer performs with the gamelan.

GLOSSARY

- shadow** a dark shape made by an object placed in the path of light
- puppet** a doll moved by hand, or by sticks
- leather** a material made from animal skin
- flat** smooth and even, like paper
- celebrity** a famous person

A Look and write.

audience cardboard box get married glass jar king metal pan queen wooden spoon



B Read the clues. Complete the words.

- | | | | |
|------------------------------|-----------------|---------------------------------|--------|
| 1. to make something too hot | b_____ | 4. to make something cold again | c_____ |
| 2. a place where actors act | t_____er | 5. to put milk into a glass | p_____ |
| 3. a traditional story | f_____y t_____e | 6. to put things together | m_____ |

C Rewrite these active sentences as passive sentences.

- They drive cars on the left in the UK. *Cars are driven on the left in the UK.*
- They grow grapes in France.
- Do they speak German in Austria?
- How do they make halwa candies?
- They don't sell newspapers here.
- They teach science in a different classroom.

D Make past passive questions. Then match the questions with answers a–e.

- | | |
|---|---|
| 1. Who / the telescope / design / by? | a. The book <i>Murder on the Orient Express</i> |
| 2. When / penicillin / discover? | b. In the Atlantic Ocean |
| 3. What / write / by Agatha Christie / in 1933? | c. Hans Lippershey |
| 4. Where / the Titanic / find? | d. The Eiffel Tower |
| 5. What / build / by Gustave Eiffel / in 1887–89? | e. In 1928 |